

UTAH DIVISION OF ARTS & MUSEUMS
PUBLIC ART PROGRAM
requests artists' qualifications for the
SALT LAKE COMMUNITY COLLEGE
WESTPOINTE CAMPUS
Salt Lake City, Utah



Salt Lake Community College in partnership with
the Utah Division of Facilities Construction and Management
and the Utah Arts Council's Public Art Program

requests artist or artist team qualifications for the
creation of site specific artwork(s)

for the Salt Lake Community College
Westpointe Career and Technical Education Center (WCTEC) in Salt Lake City, Utah.

DEADLINE FOR SUBMITTAL: June 30, 2016

THE SLCC WESTPOINTE CAMPUS ART SELECTION COMMITTEE STATEMENT

In honor of and in keeping with SLCC's desire to create a "state of the art" facility to serve the technical education needs of Westpointe, Salt Lake City and environs, the Art Selection Committee is interested in working with an artist(s) that understands this pride of place and the earnest desire to serve the community. This contemporary, sustainable, safe, light filled and high tech facility deserves site specific public art that is part of and communicates these qualities to the students and the community at large.

The site and facility is adjacent to a major commuter highway with architecture that proudly announces itself to the community and the students it serves. The Art Selection Committee has expressed an interest in both "place making" for the community and creating space / place that adds to the experience for the students. The campus also includes photovoltaic panels on both the grounds and roof that may be accessible for power supply to artist's concepts.

The Art Selection Committee has identified areas that may be suitable for public art but remain open to artist suggested sites as envisioned by the artist. Areas identified include: the interior and/or exterior of the main entry points at the southwest and southeast, the East plaza and/or screens between parking and the facility, the 200 yard undulating berm located east of the building and west of I-215, two story space showroom on the south end main level and finally, the nearly 200 yard interior west side corridor.



SALT LAKE COMMUNITY COLLEGE WESTPOINTE CAMPUS

SLCC's master plan has identified the need for expanded programs and services near Salt Lake International Airport as early as 2008. In 2014, the College took occupancy of the Westpointe leased building, providing classroom and support space for key technical education programs, including aviation, electronics and non-destructive testing, as well as industry partners. In 2014, SLCC received permission from the State of Utah to acquire nearby land parcels for development of a 121,000 gross square feet (GSF) technical education facility for high demand trades; by July 2015, the College had purchased seven parcels totaling 19.61 acres in the Westpointe Center Business Park.

WESTPOINTE CAREER AND TECHNICAL EDUCATION CENTER (WCTEC)

The WCTEC will bring together technical education in multiple trades vital to the long term economic vitality of the Salt Lake Valley, including Composites Manufacturing, Plastics Manufacturing, Machining, Welding, Mechatronics/Industrial Robotics, Diesel Maintenance and CDL Truck Driving.

The building will include skills labs, classrooms, faculty offices and administrative support. In addition, the building will provide space for collaboration with industry partners in multiple fields. The WCTEC is intended to support current and future training needs in flexible high quality space that will serve the College for decades to come.

The project vision is that the Westpointe Career and Technical Education Center will be a state-of-the-art technical education facility that prepares students for successful careers in regional business and industry. It will be a safe, healthy and technically sophisticated facility for hands-on learning, incorporating the highest possible levels of life safety, security, daylight, clean air and efficient use of energy and water into all of the activities within. The building will be flexible and adaptable to respond nimbly to the changing needs of the surrounding community. It will use its highly visible site to clearly express the goals and values of Salt Lake Community College.

The new WCTEC will establish a high standard of quality and functionality for future development of other facilities in the Westpointe Center. The building will be located on three parcels immediately to the west of Interstate 215, creating an opportunity for the building to express the dynamic activities within the building as well as the values of the College.

Center Design and Function

High bay lab spaces will be organized along one side of a linear spine, with two levels of classrooms and other support spaces on the street side of the spine. The diagram is primarily determined by the large site program (including outdoor work space and a practice course for truck driving), site geometry and



the location of identified seismic faults. The related engineering programs and student affairs support for WCTEC programs will be located in the existing leased building.

The new building is located as far south on the site as possible to encourage movement between the two buildings and to maximize the space available for related outdoor activities, such as the driving course. An seismic fault line located on the property has set specific limitations as to the location of the building on the site. Separation of trucks and heavy machinery from student and faculty parking helps to minimize possible conflicts. The main building entrance is located at the south west corner to encourage connections with the leased building.

Manufacturing, Diesel/Driving and Engineering labs are located on the east side of the main circulation spine, to provide each lab with required access to outdoor work spaces; where feasible, the upper level of the spine will create vantage points from which visitors can view into the labs. Supporting classrooms, offices and other elements occupy two floors on the west side of the spine, facing the street. As much as possible, exterior walls along the circulation spine will be transparent on the Flyer Way side of the building, to offer views of interior activities to passersby.

Shared facilities and administrative spaces are located at the far south end of the building, to place them as close as possible to the existing leased building across the street. The Showroom and the Clean-ish Room are be located near the formal building entrance to facilitate activities with industry partners. In general, classrooms will be shared and are conveniently situated relative to the departments using them. Among the departments, Diesel and CDL Truck Driving will share some support spaces, including labs as well as computer labs and classroom. Composites will benefit from adjacency to Plastics and also to Machining.



VISION

Salt Lake Community College will be the premier comprehensive community college in the nation.

MISSION

Salt Lake Community College is a public, open-access, comprehensive community college committed to serving the broader community. Its mission is to provide quality higher education and lifelong learning to people of diverse cultures, abilities, and ages, and to serve the needs of community and government agencies, business, industry and other employers.

The College fulfills its mission by:

- Offering associate degrees, certificate programs, career and technical education, developmental education, transfer education, and workforce training to prepare individuals for career opportunities and an enriched lifetime of learning and growing;
- Offering programs and student support services that provide students opportunities to acquire knowledge and critical thinking skills, develop self-confidence, experience personal growth, and value cultural enrichment;
- Maintaining an environment committed to teaching and learning, collegiality, and the respectful and vigorous dialogue that nourishes active participation and service in a healthy democracy.

BUDGET

\$309,000 is available for all related expenses of this Public Art commission(s) including (but not limited to) artist fees, fabrication, insurance, shipping, travel, installation, documentation, etc.

ELIGIBILITY

This project is open to American legal / resident professional artists. The Art Selection Committee members and immediate families, employees or consultants of AJC Architects, Utah Arts & Museums Staff and Board and the contracted construction company are not eligible for this project.

SUBMISSION OPTIONS, INSTRUCTIONS AND REQUIRED MATERIALS

Interested artists may submit applications **EITHER** online or by compact disc/DVD as described below. The deadline is the same for both methods and is not a postmark deadline. Please do not include supplemental materials beyond the requirements listed below:

On-line Method:

- Register at www.callforentry.org and follow the directions for registration and submitting material for this Public Art Request for Qualifications.

This online application process will prompt you for all necessary documents and information. If your work cannot be documented well with still image you may submit movie files via the "Compact Disc or DVD Method" listed below. Movie files cannot be submitted via the online method.

Compact Disc Method:

A PC compatible CD labeled with contact information of 1) **applicant's name** and 2) **email and phone number**. The disc should contain:

- A **letter of interest** of not more than two typewritten pages in pdf format. This letter should include 1) the artist's reasons for interest in this project in particular and 2) a description of how his/her work and/or experience relates to the project.
- A maximum of **six (6) images** of previous site-specific public work. All images must be in JPEG format, 1920 pixels maximum on the longest side, 72 dpi, with compression settings resulting in the best image quality for under 2MB file size. The image files should be named so that the list sorts in the order of the image listing.
- A **pdf document indentifying each image** to include title, year, medium, dimensions and artist name.
- A **professional resume** in pdf format.

If the work cannot be documented well with still images, a DVD (of no more than 3 minutes) may be submitted as documentation of an artist's projects. Please note only one media, movie file or images, can be presented to the committee per artist in this preliminary phase.

If the artist wishes the material returned, an addressed and stamped envelope of ample size and postage for return of the CD or DVD should be included. Material that is not accompanied by a stamped envelope cannot be returned.

Utah Arts & Museums will not be responsible for applications delayed or lost in transit. While all reasonable care will be taken in the handling of materials, neither the Utah Division of Arts & Museums nor the SLCC Westpointe Campus Art Selection Committee will be liable for late, lost or damaged materials or electronic files. Faxed or e-mailed applications cannot be accepted.

The SLCC Westpointe Campus Art Selection Committee reserves the right to withhold the award of a commission or re-release the call for entries.

DEADLINE

Complete application packages must be RECEIVED in the Utah Public Art Program office or online by 5 pm on or before **June 30, 2016**. (THIS IS NOT A POSTMARK DEADLINE.) All supporting materials must accompany application. Online applications will close at 11:59 PM MST.

Please send, deliver or courier compact disc method applications to:

Jim Glenn, Utah Public Art Program
Attention: SLCC Westpointe Campus
Utah Arts & Museums
300 S Rio Grande
Salt Lake City, UT 84101

SELECTION PROCESS AND SCHEDULE

The Art Selection Committee will review all material properly submitted. Finalists will be selected from the first phase of applicants submitting qualifications. Selection of the commissioned artist(s) will be based on proposals presented to the Art Selection Committee on September 15.

Once an artist(s) is selected as a finalist, we will work to provide as much information and access as possible to assist in research while developing the proposal.

An honorarium will be offered to the finalists to assist with the costs associated with the preparation of a proposal and travel. This honorarium will be applied toward the commission amount for the artist(s) awarded the commission.

Schedule:

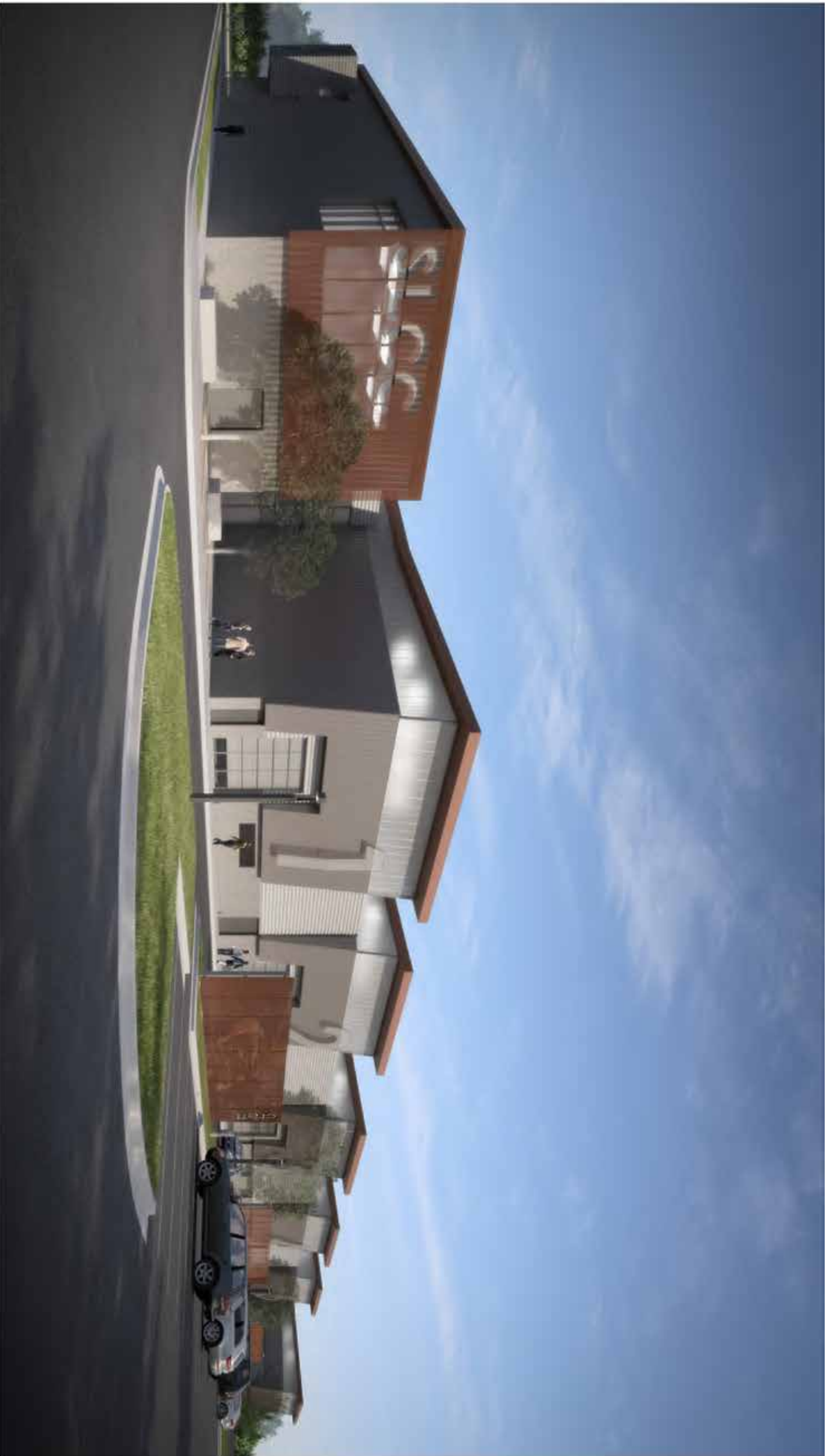
June 30, 2016 – Deadline for receipt of preliminary materials
July 14, 2016 – Committee Review
September 15, 2016 – Finalists interviews
November, 2017 – Project substantial completion

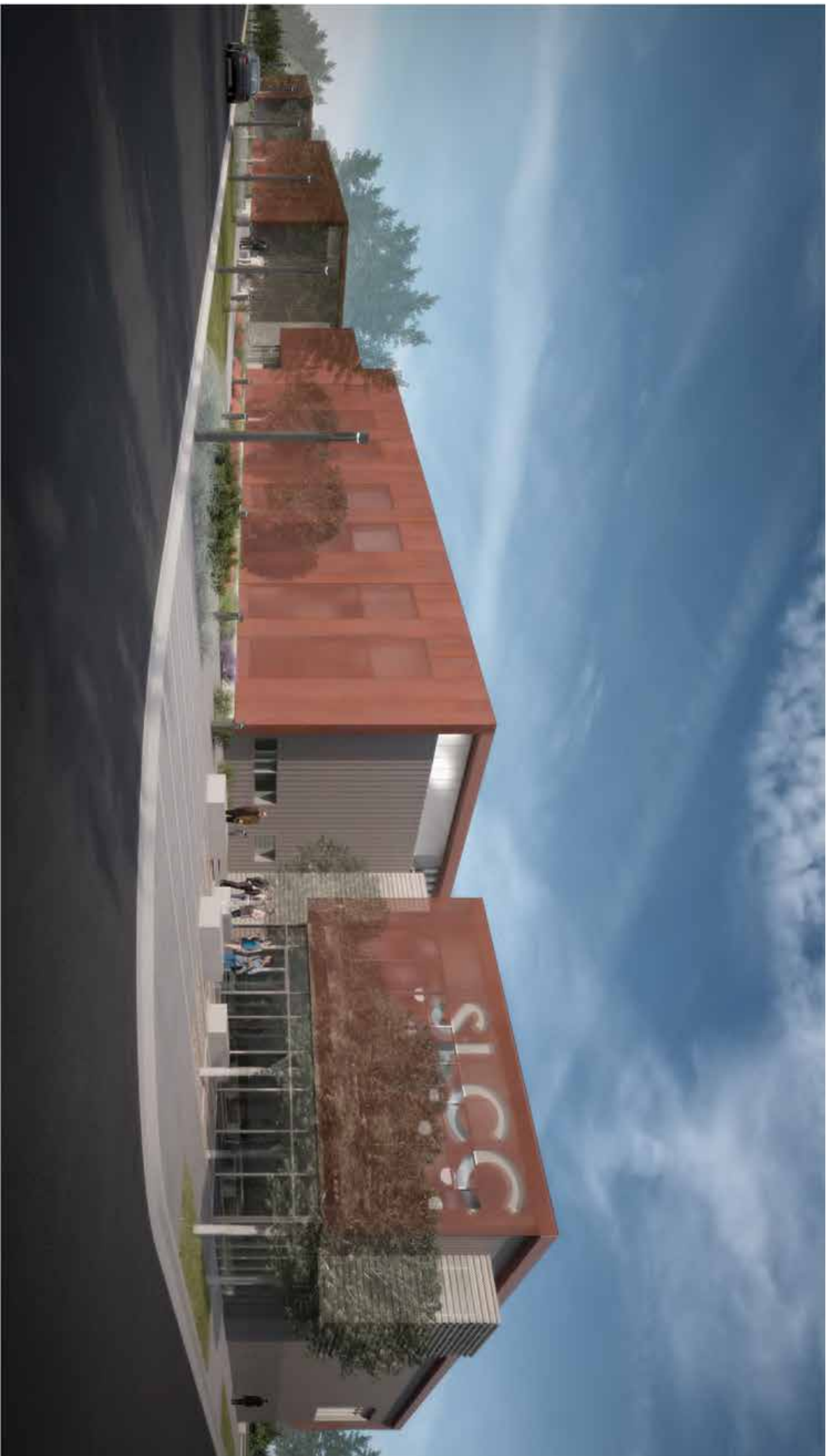
SLCC WESTPOINTE CENTER ART SELECTION COMMITTEE

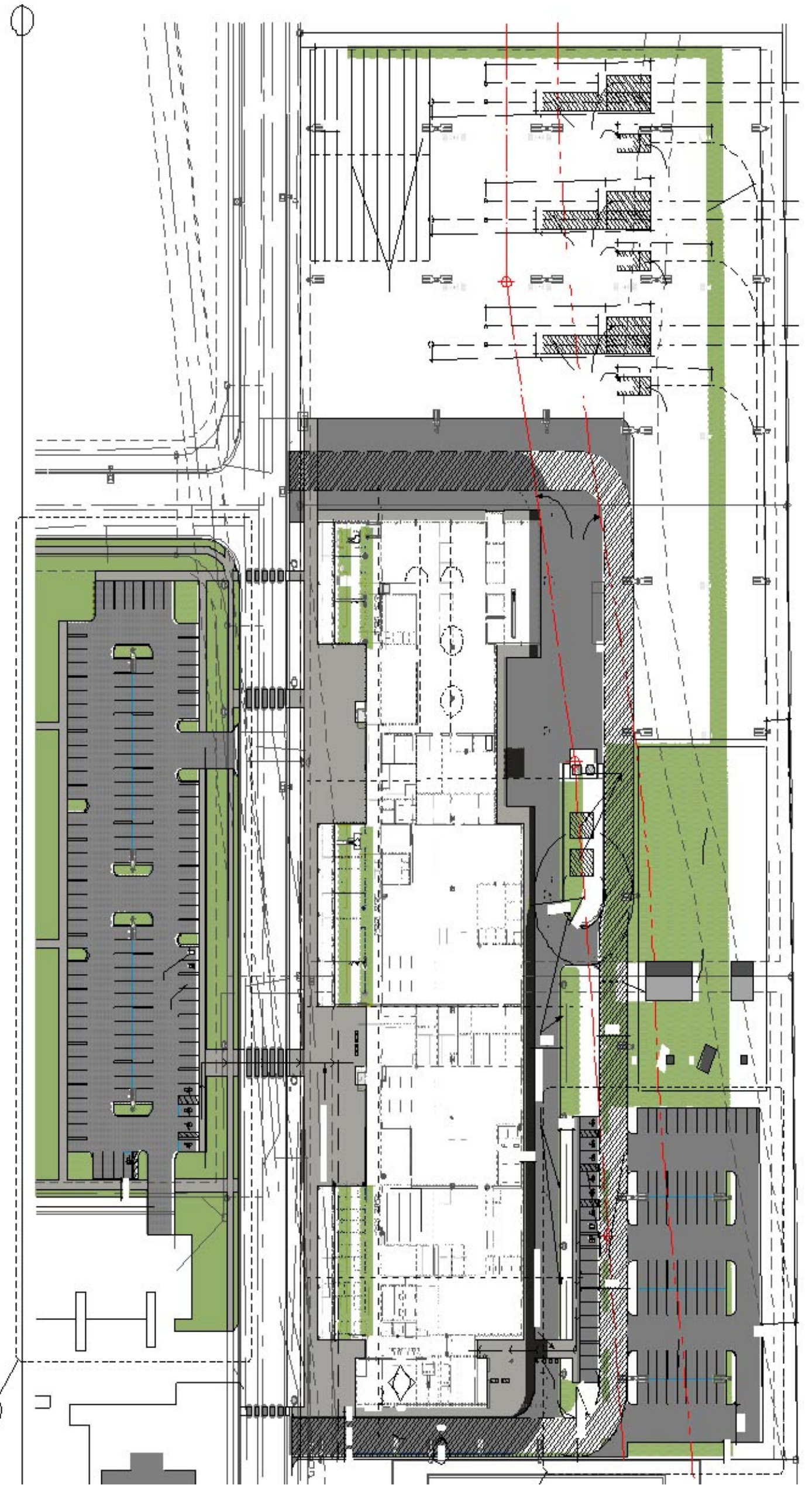
Tom Alderwood..... *Utah Arts Council Board of Directors*
Bob Askerlund..... *SLCC Assistant VP for Facilities Services*
Brian Griggs..... *Artist and SLCC – Visual Arts Department*
Jill Jones..... *AJC Architects*
Dennis Klaus..... *SLCC –VP Business Services*
Barton Mace *SLCC – Project Manager*
Taylor Maxfield *DFCM Project Manager*
Andrew Soderquist... *Big D Construction Project Manager*

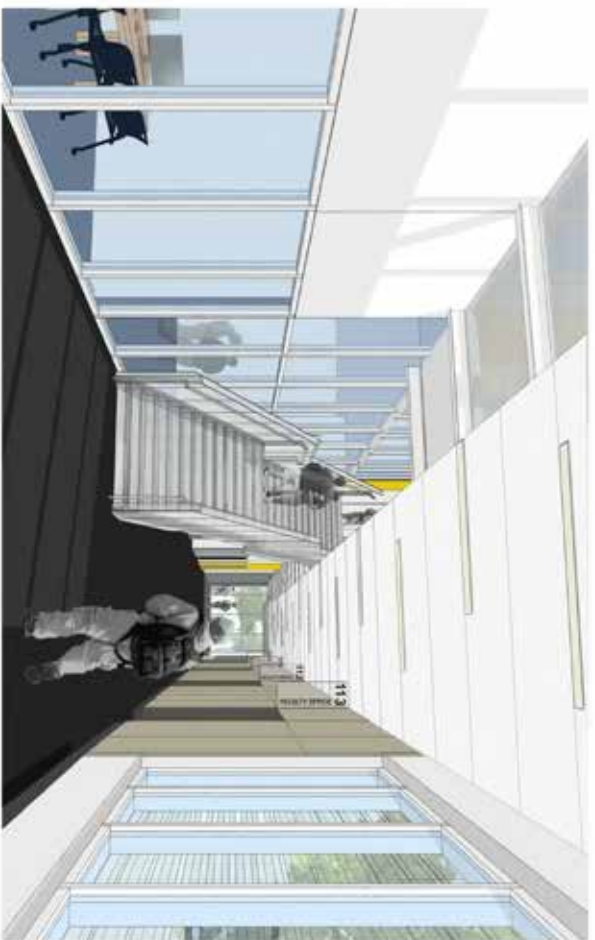
If you have any questions about this or other projects information is available at: publicart.utah.gov
or contact Jim Glenn at 801-245-7271 or e-mail at: jglenn@utah.gov
or contact Felicia Baca at 801-245-7272 or e-mail at: fbaca@utah.gov

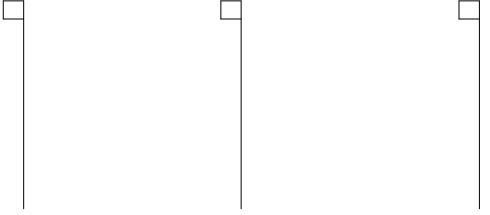
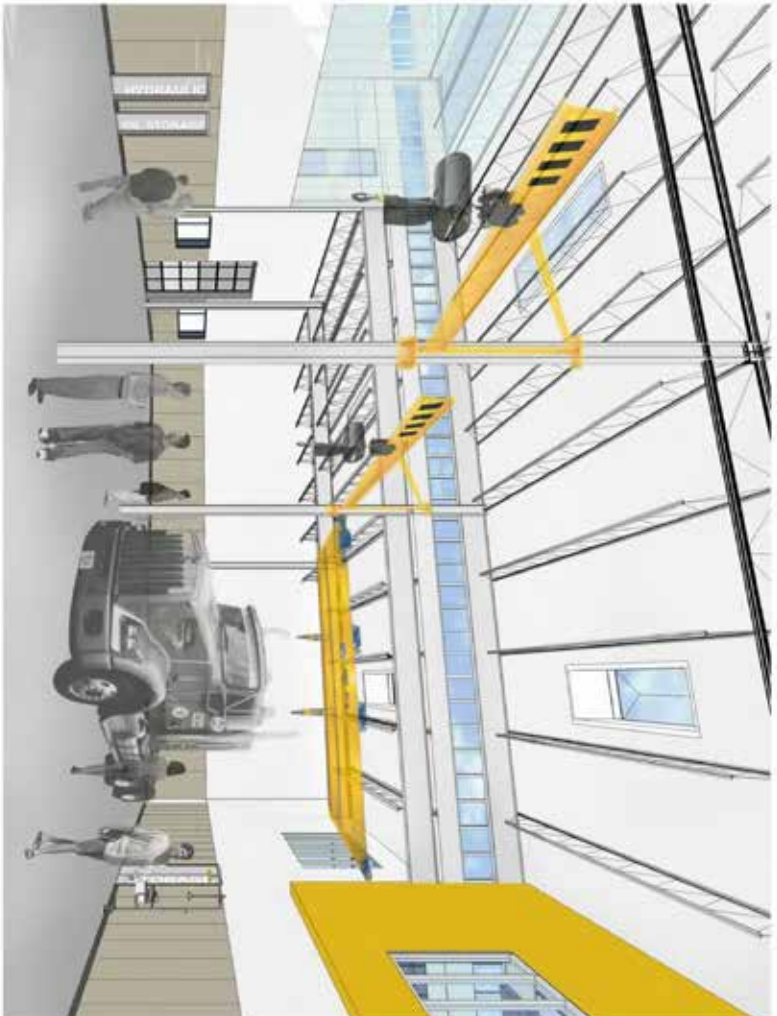
Images courtesy of AJC Architects









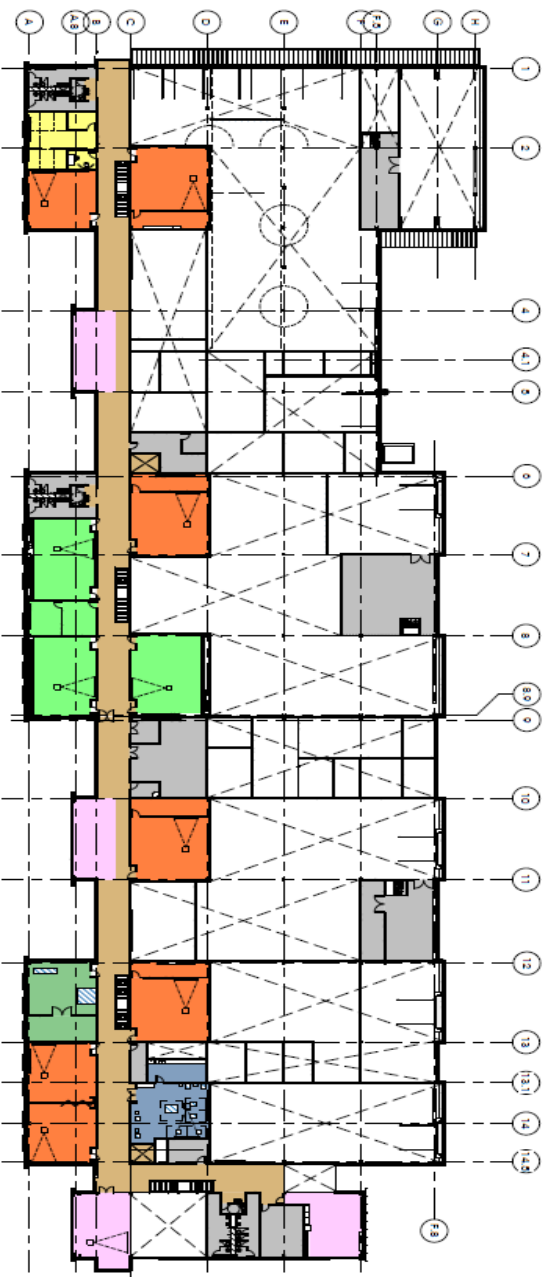


1

2

3

20 | 19 | 18 | 17 | 16

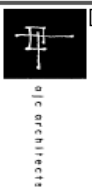


2 OVERALL PLAN - LEVEL 2 Color East up 1/30
Scale: 1" = 30'



- Department Legend
- A1 SHIELD
 - S1 ADMINISTRATION
 - S1 MANUFACTURING - COMPOSITE
 - S2 MANUFACTURING - PLASTICS
 - S3 MANUFACTURING - WELDING
 - S4 MANUFACTURING - MACHINING
 - Circulation
 - D1 DISABLING - QOL TRUCK DRIVING
 - D2 DISABLING - DIESEL

ARCHITECT 1544



703 South 1700 South
Salt Lake City, Utah 84103
PH: 801.400.8818
FX: 801.400.4411
WWW.OCCARCHITECT.COM

NOT FOR CONSTRUCTION

CONSULTANT

OWNER INFORMATION

State of Utah
Department of Administrative Services
Division of Facilities
Construction & Management
5410 State Office Building
Salt Lake City, Utah 84103
Phone: (801) 538-2018
Fax: (801) 538-2307
Internet: <http://www.dem.utah.gov>

PROJECT DESCRIPTION

DESIGN DEVELOPMENT DRAWINGS

201 Lake Community College
Westshore Center + Technical
Education Center
1500 West 2010
Provo, UT 84601
Project No. 15100000

REVISIONS	DATE	DESCRIPTION